

SinuCleanse

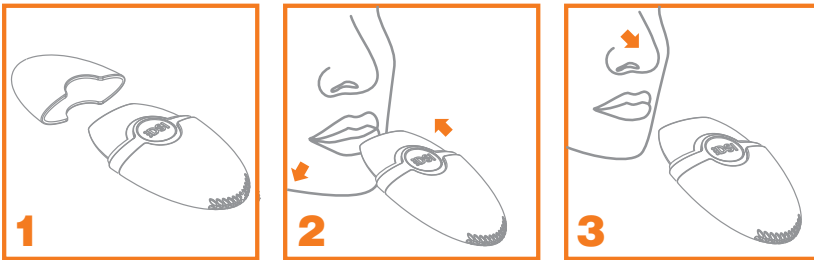
BREATHE

INHALO:DSI™

DRY SALT INHALER
BRONCHIAL
Lower Respiratory Cleanser



DIRECTIONS FOR USE



For use by adults and children over the age of 5 years old For ORAL Inhalation (lower respiratory)

1. Remove cap from device
2. Inhale from the device with normal intensity.
3. After each inhalation, remove the inhaler, close your mouth and exhale through the nose. Nasal exhalation is required in order to sustain the therapeutic effect of the salt.

Use the inhaler in one continuous session for 15-20 minutes daily, or divide the use into three sessions lasting 7-10 minutes each. Use for 21 days continuously. Replace top cap after each use.

Helpful Hint: Take a few sips of water prior to use. This will help to hydrate the lower respiratory tract and allow deep penetration.

Regular use of Bronchial Dry Salt Inhaler promotes optimal bronchial hygiene and health, helping to alleviate lower respiratory discomforts.

WARNINGS

Special Caution: Do not use inhaler in cases of severe pulmonary failure.

- in case of acute diseases or high blood pressure, consult a physician before use
- shared use of this device is not recommended
- this product does not replace current medication and should be used in conjunction with medically prescribed therapies upon the advice of your physician
- wipe mouthpiece clean after each use
- do not allow saliva or other liquids to pass through or enter device
- do not shake or drop device, this could cause salt crystals to break apart, it is important that salt crystals remain in the device to avoid any transitory irritation
- **CONTAINS SMALL PARTS. KEEP OUT OF REACH CHILDREN.**
- For children ages 5 and over requires adult supervision.

OTHER INFORMATION

- after first use, replace after 6 months for optimal therapy
- store at controlled room temperature 15 to 30°C (59 to 86°F)
- see package for lot number
- **KEEP THIS SHEET FOR FUTURE REFERENCE**

MAINTENANCE

Periodically check for visible obstructions in the air holes located at the bottom of the device. To remove obstructions, you may have to dislodge clogged particles with a fine needle or pin to allow air to pass through the opening. The exterior of the device may be cleaned with a damp clean soft cloth. Mouthpiece may be removed and rinsed with warm tap water. Dry thoroughly before replacing.

PRODUCT FACTS

Purpose

Respiratory Cleanser

Product Information

Salt Cartridge contains 5 grams Natural Unprocessed Rock Salt Crystals (Sodium Chloride, Magnesium and Calcium in different natural forms) Helps to Alleviate: chest congestion, allergy discomforts and other symptoms which may be associated with certain lower respiratory conditions.